



In the centre of our extensive disposition system stands the practical, IT-supported realisation in the benefit of cost control and quality. Above the flexible support within the whole service-process, we offer you several opportunities to gain advantages in competition by using COTRIS.

COTRIS ROAD

Cost-optimizing fuel-strategies

The fuel-strategies of COTRIS ROAD – a new function of our internet-compatible disposition software – supports you by optimizing fuel-strategies to reduce your costs. Since the price for diesel varies up to 30 cent per litre in the international long-distance traffic, it is important to get your petrol in the right place and at the right time. You can save up to 250,- € per tank filling!

The basis of the program's search results for fuel stations are the actual fuel prices, that are partially provided by the petrol (cards-) companies. But the optimization also includes company owned filling stations, special discounts for companies and calculated taxes. The results can be displayed either in the disposition software or on a map, and can be provided automatically to the driver by the means of an optional fleet communication system.

Overview of our system

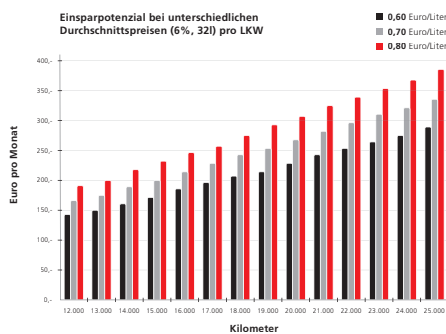
- Integrated complete solution
- Cost-optimizing fuel-strategies
- Order-related control of average fuel consumption
- Highest grade of automation by the means of a fleet communication system
- Multiple opportunities of extension

By order-related control of fuel consumption, more options for saving money can be offered:

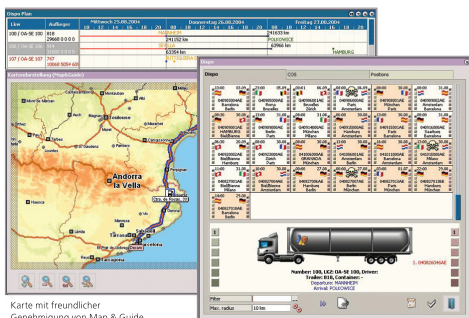
- uncovering of tank-card abuse
- optimization of uneconomic driving behaviour
- avoiding of (private) "extra journeys"

What will you have to pay for your **tankfilling** next time?

Lower your fuel cost with the help of COTRIS ROAD optimizing fuel-strategies.



The potential savings per truck and per month (based on a 6% cut of price and an average consumption of 32 l)



The graphic conditioning of the data allows a fast and simple reception and processing of information

